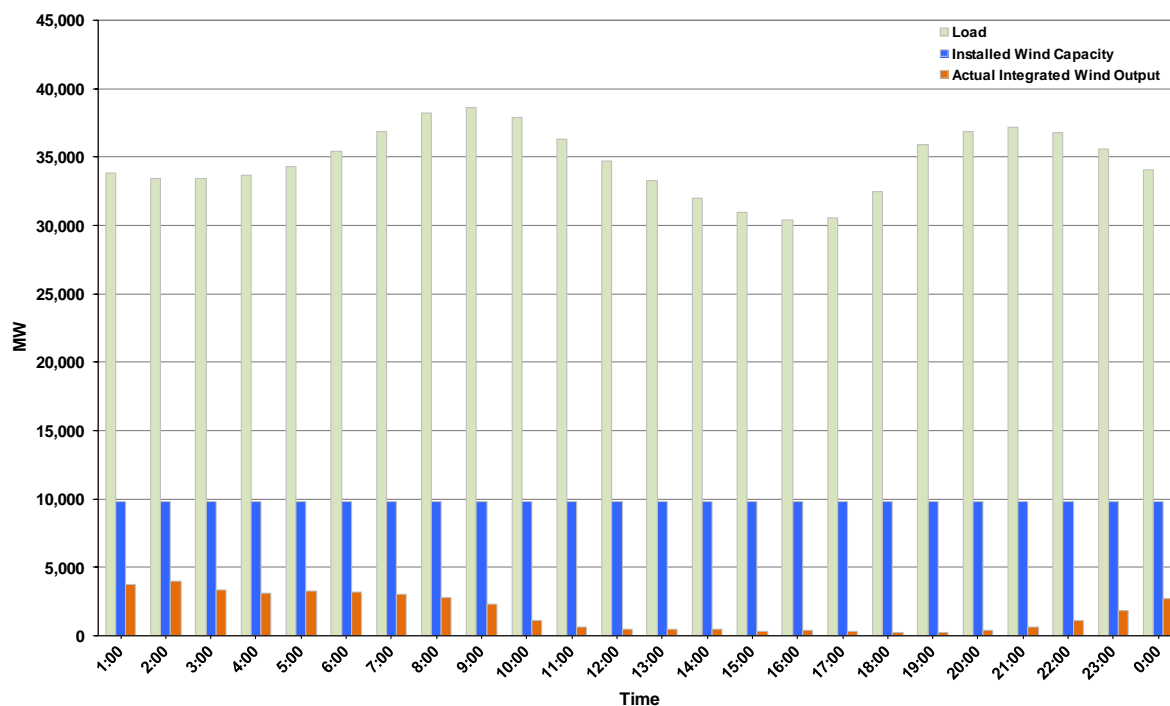




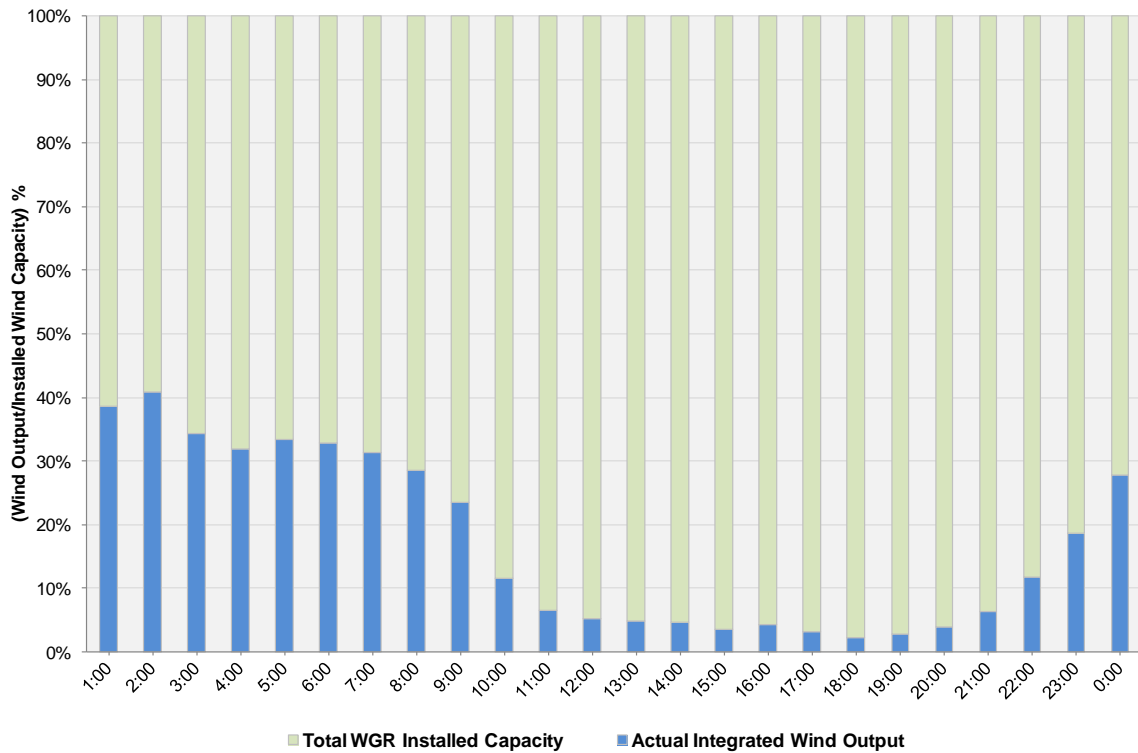
## ERCOT Grid Operations Wind Integration Report: 01/06/2013

Peak Load	<b>38,654 MW</b>
Load Peak Hour (HE)	<b>09</b>
Wind over Peak	<b>2,301 MW</b>
Wind Record 12/25/12	<b>8,638 MW</b>
Max Wind Value	<b>4,190 MW</b>
Wind Peak Time	<b>01:07</b>
Wind Integration %	<b>12.50%</b>

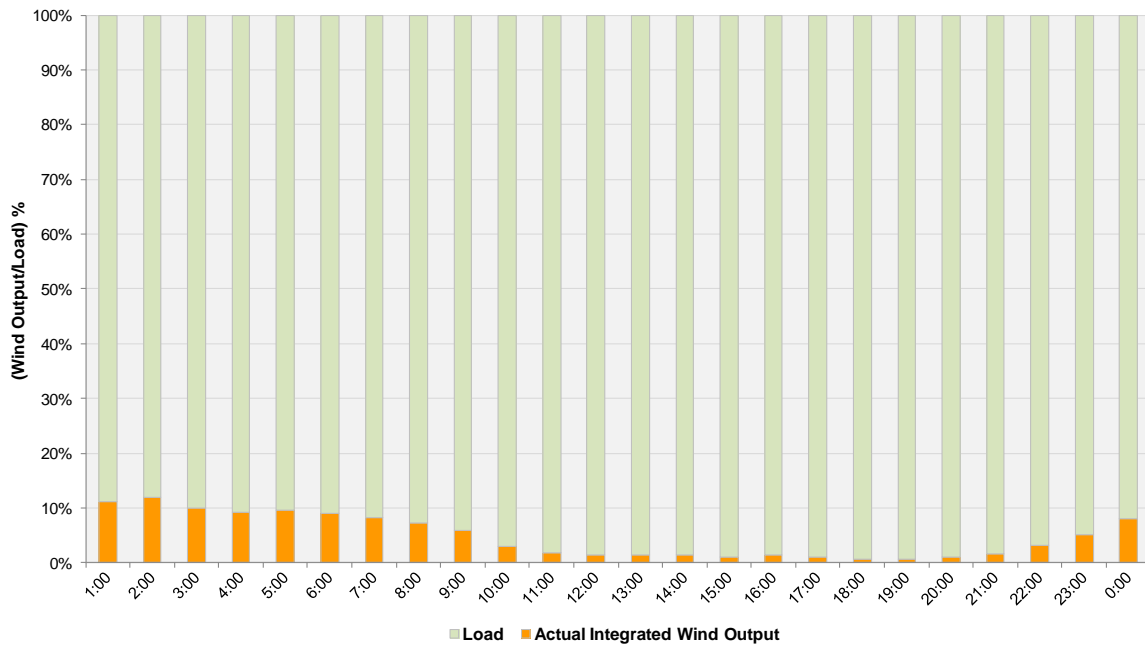
**Hourly Average Actual Load vs. Actual Wind Output  
01-06-2013**



**Actual Wind Output as a Percentage of the Total Installed Wind Capacity**  
**01-06-2013**



**Actual Wind Output as a Percentage of the ERCOT Load**  
**01-06-2013**



ERCOT Load vs. Actual Wind Output 12/30/2012 - 1/6/2013

